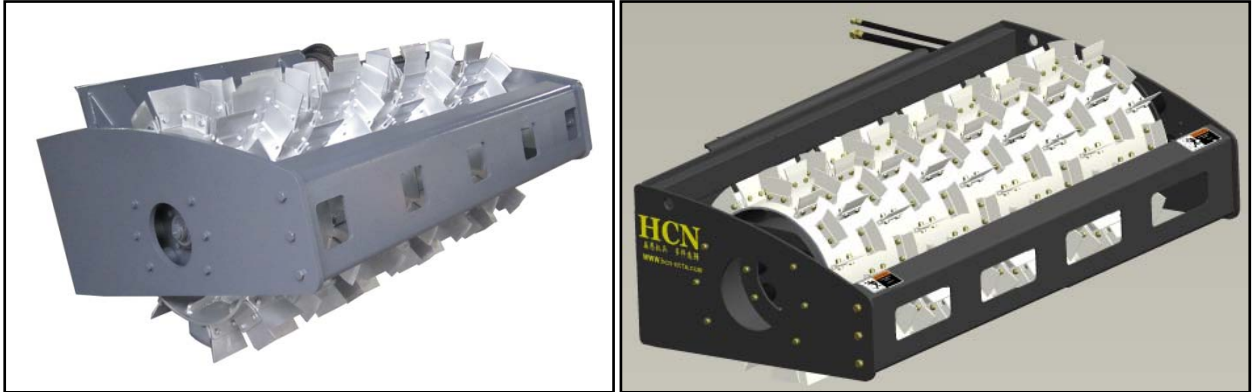


Series 0214 Resonance Ice Remover

I. Pictures:



II. Main technical parameters:

Series 0214 resonance ice remover		
Model	021460	021472
Total length (mm)	1095	1095
Total width (mm)	1750	2016
Total height (mm)	736	736
Icebreaking width (mm)	1500	1800
Weight (including hanging parts) (Kg)	780	895
Operating flow (L/Min)	60-80	60-80
Allowed maximum pressure (Mpa)	20	20
Hanging and installing model	Skip steer loader/small loader	

III. Structural characteristics of the product

1. Automatic adjustment of the exciting force and the direct distance between the ice removal roller and ground as per the thickness of the ice layer on the pavement, which effectively prevents damage to the pavement by the ice skate blade.

2. With a sharp ice skate blade and crossed arrangement, ice and snow with a maximum width of 100 mm will be broken, which improves the breaking and stripping capabilities of the ice removal roller for the ice layers on the



pavement and improves the working efficiency.

3. The application of the vibration reduction structure makes the operation of the ice removal roller more comfortable for operators and also prolongs the service life.

4. Compared with ice removal by snow-melting agents such as cloth and salt, there is no pollution of the environment.

5. Fast and convenient installation.

Note: HCN products are constantly updated and improved for users. Rights to change the parameters and design are reserved without notifying the users in advance. In case of possible appearance and color differences between the products shown in the pictures and the actual products, the actual one shall prevail.