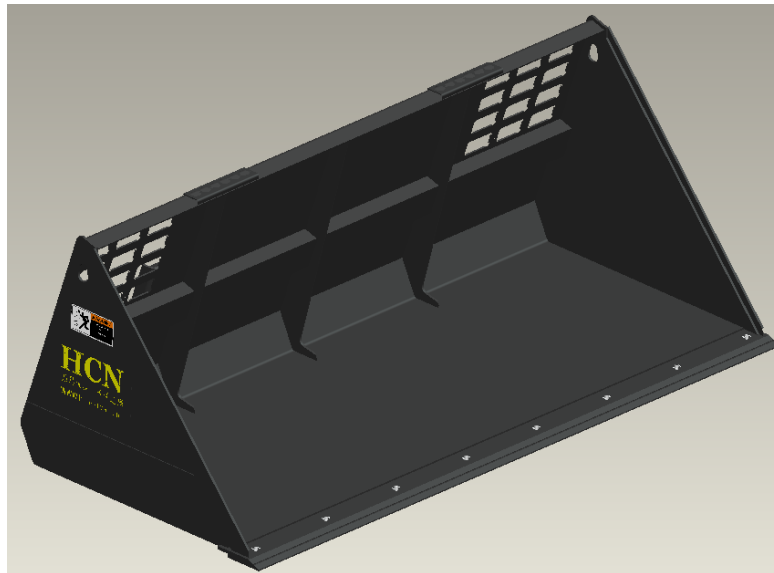


Series 0211 Snow Bucket

I. Picture



II. Main technical parameters:

| Technical parameters for snow bucket | | | | |
|---|-------------------|--------|--------|--------|
| Model | 021160 | 021172 | 021184 | 021196 |
| Total length (mm) | 1530 | 1830 | 2130 | 2440 |
| Total width (mm) | 950 | 950 | 950 | 950 |
| Total height (mm) | 780 | 780 | 780 | 780 |
| Paving volume (m ³) | 0.64 | 0.76 | 0.88 | 1.00 |
| Heaping volume (m ³) | 0.70 | 0.90 | 1.10 | 1.30 |
| Total weight (including hanging parts) (Kg) | 255 | 273 | 305 | 326 |
| Hanging and installing model | Skip steer loader | | | |

III. Main characteristics of product

1. Efficient at removing large blocks of snow and other loose materials.
2. Quick replacement of bolted edge plate; replaceable nylon blade plates.



BeyondTech Machinery Co., Ltd.

Attachment: HCN products are constantly updated and improved for users. Rights to change the parameters and design are reserved without notifying the users in advance. In case of possible appearance and color differences between the products shown in the pictures and the actual products, the actual one shall prevail.