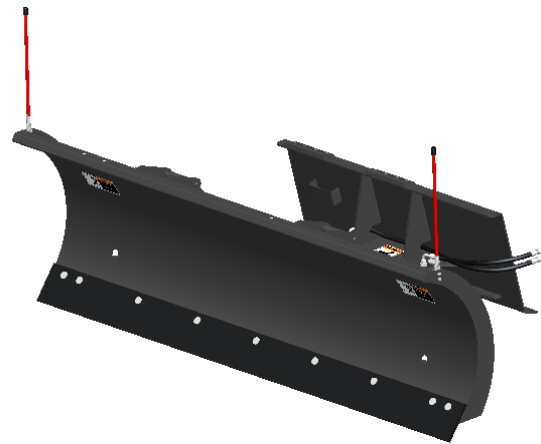


Series 0208B84 Snow Shovel (Custom-Made)

I. Picture:



II. Main technical parameters of product:

Technical parameters of series 0208B84 snow shovel	
Model	0208B84
Total width (mm)	2130
Total length (mm)	1070
Height (mm)	1173
Transport height (mm)	690
30° working width (mm)	1845
Deflection angle (hydraulic) (°)	±30
Weight (including hanging parts) (Kg)	305
Maximum allowable pressure (M pa)	21
Hanging and installing model	Skip steer loader

III. Main characteristics of product

1. Capable of turning left and right with an angle of $\pm 30^\circ$ under hydraulic control; ease of changing the direction of cleaning in a quick and easy manner; convenient for removing thin snow from sidewalks and carriageways.



BeyondTech Machinery Co., Ltd.

2. Reinforced steel structure, replaceable bottom wear-resistant blade, and blade bolted to snowboard, providing convenient and fast operation. Nylon blade available.

3. Capable of turning over obstacles and preventing damage to parts; automatic return of shovel plate under the action of springs after passing obstacles.

Attachment: HCN products are constantly updated and improved for users. Rights to change the parameters and design are reserved without notifying the users in advance. In case of possible appearance and color differences between the products shown in the pictures and the actual products, the actual one shall prevail.