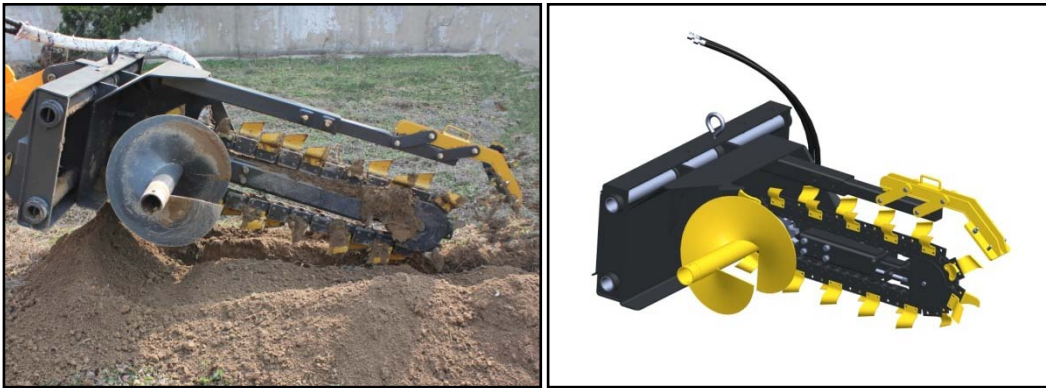


Series 0207 Trencher

I. Pictures



II. Main technical parameters

Model	020724	020736	020748
Total length (mm)	1703	1990	2355
Total height (mm)	767	767	767
Total width (mm)	1330	1330	1330
Weight (including hanging parts) (Kg)	385	425	455
@65° trenching depth (mm)	600	900	1200
Trenching width	150	150	150
Flow (l/min)	80-110	90-110	90-110
Allowed maximum pressure (MPa)	21	21	21
Applicable model	Skip steer loader/excavator		

III. Main features of the product

1. Continuous trencher, adaptive to skip steer loaders and excavators.
2. Mainly for trenching, slotting, and paving of underground farmland pipelines and urban and rural optical cables.



3. Adjustable ditching depth and possible operation of the trencher close to the wall by manual side-moving adjustment.

Note: HCN products are constantly updated and improved for users. Rights to change the parameters and design are reserved without notifying the users in advance. In case of possible appearance and color differences between the products shown in the pictures and the actual products, the actual one shall prevail.