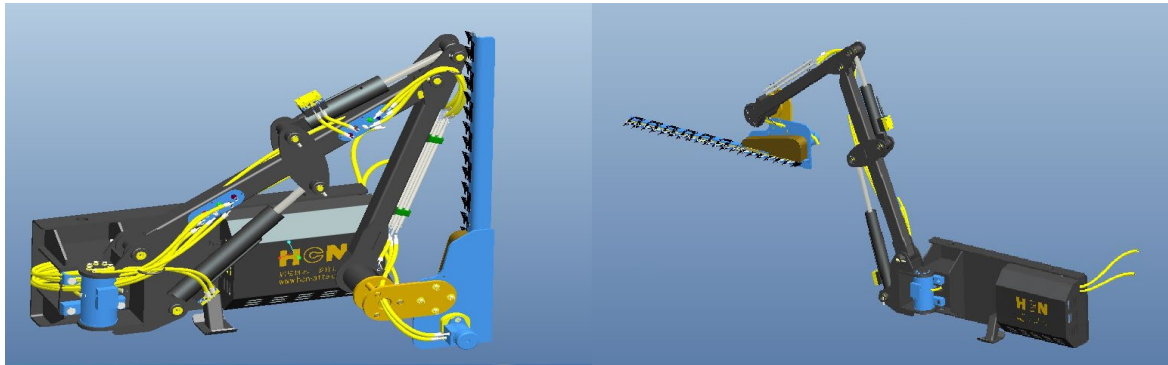


052460 Hedge Trimmer

一、Photo



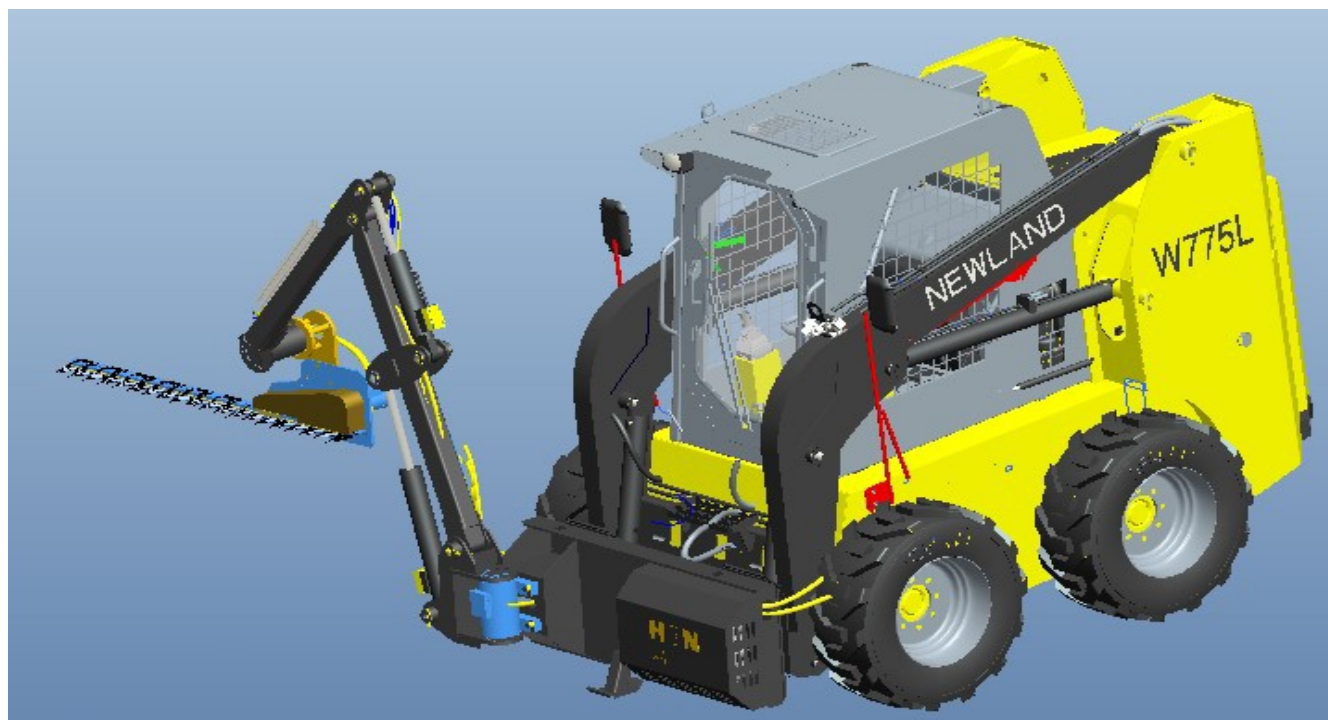
二、Main specification

Hedge Trimmer Tech-specs	
Model	052460
Overall width (Transportation size)(mm)	1600
Overall height (Transportation size)(mm)	1560
Trimming width (mm)	1500
Max. branch-trimming diameter (mm)	30
Range of horizontal trimming (mm)	Vertical: 860-2300 (from the bottom of the product frame)
	Horizontal: 420-3490 (from the left side of product frame)
Range of vertical trimming (mm)	Vertical: 700-3970 (from the bottom of the product frame)
	Horizontal: 1000-2680 (from the left side of product frame)
Weight (including bracket) (Kg)	462
Working pressure (MPa)	2.8-16
Required hydraulic flow (L/Min)	25-75
Suitable machine	1.5T-8T skid steer loader, construction vehicle

三、 Feature

The product adopts a reciprocating trimming mechanism, which can quickly trim green belts, shrubs, weeds, etc. It is convenient and quick to use, and is widely used in highway, municipal garden, urban landscaping and other large-scale pruning projects.

- 1、 Part of the hoses are arranged in the boom to reduce the damage caused by the exposure to the outside;
- 2、 The actual working trimming range depends on machine.



Note: The product is constantly updated and improved. We reserve the right to change the parameters and design without informing the users in advance. The color of the product in the photo may differ from the actual product. The color standard is subject to the actual product.













