

CATALOGUE

Safety Instruction	2
Products Instruction.....	3
Operation Instruction.....	4
Maintenance Instructions	5
Storage Instructions.....	5

Safety Instruction

1. Before the installation, please be sure to read the manual

Operation and maintenance personnel must be carefully reading and familiar with manual before the installation, operation, and maintenance attachments, improper installation, operation, and maintenance attachments will likely lead to serious injury or death.

2. Read and understand all safety statement

- ※ Reading familiar with all safety mark and security statement before work;
- ※ Operation comply with all occupational safety regulations, local laws and regulations and other professional guidelines;
- ※ Assembly, maintenance, operation follow the good work habits.

3. Be familiar with attachments

- ※ Familiar with and understand before operation machine performance and parameter;
- ※ Careful inspection machine before work, be sure that all devices debugging when normal before we can carry out the homework;
- ※ Ensure that the machine is installed firmly, change may have damaged parts, ensure that all hydraulic joint and hydraulic devices connected firmly;
- ※ Ensure that all safety marks stick in the correct position and mark font clear.

4. Wear protective clothing

Operation to wear safety clothing, wear protective glasses or mask to prevent operation is splash content cause harm to human body.

5. Don't in any form of machine modified

6. Safe maintenance of machine

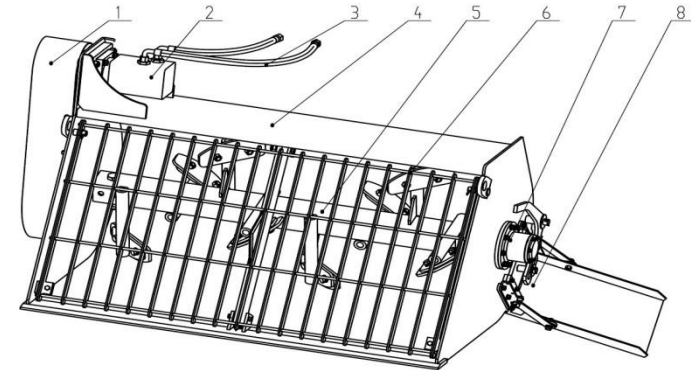
- ※ Maintenance tools must be down to level the ground, far away from the traffic and other dangerous places. If you need rises machine maintenance, must use solid objects can cushion for leaning on stability;
- ※ Maintenance should be according to the operating procedures require the use of special tools. If there is no special tools, it can use a similar tool, in ordinary tools can make the parts have this or that kind of damage, it is necessary to use a special tool.

7. Safe operation of a machine

- ※ A drunk or drug response of cases do not operate;
- ※ If anyone enter the work risk area, it should immediately stop machine operation and put the machine flat on the ground.

. Products Instruction

1. Structure:



Picture-01

- 1—Gear Cover; 2—Motor; 3—Hydraulic tubes (within oil drain port); 4—Bucket; 5—Auger; 6—Fence; 7—Bearing Seat; 8—Discharge Chute

2、 Technical Performance:

Concrete mixer bucket		
Model	031060	031072
Overall Length (mm)	1100	1100
Overall width (mm)	1510	1815
Overall height (mm)	1015	1015
Overall weight (kg)	560	650
Bucket Capacity (m ³)	0.55	0.75
Rotating speed (r/min)	20-60	20-60
Working pressure (Mpa)	16-21	16-21

Working Flow (L/min)	40-110	40-110
----------------------	--------	--------

Suitable machine: skid steer loader, front end loader, mini wheel loader.

Note: ①The particle size of concrete raw stone is less than 20mm; ②The capacity of each stirring material is determined by the customer according to host machine actual lifting capacity and the lower table concrete per cubic weight.

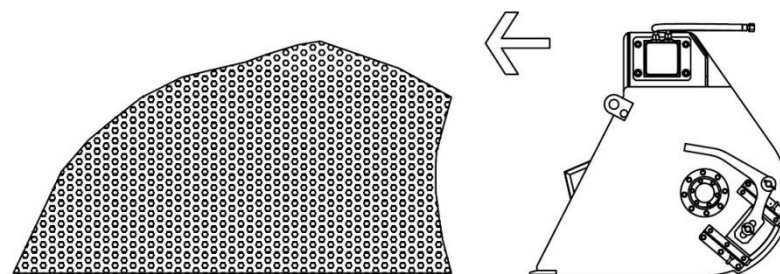
Concrete Model	C20	C25	C30
weight Kg/m ³	2396	2400	2430

. Operation Instruction

Mixer bucket install in front of the loader, rely on loader driving for loading material operation, rely on loader hydraulic power for mixing material operation. It suitable for construction sites, roads and other types working areas. The specific operation is as follows:

1. Connect concrete mixer bucket onto host machine, then connect hydraulic tubes onto oil ports which one host machine.
2. Turn on host machine power switch, adjust the direction and angle of bucket.

3. Load the material (①Drive host machine for loading material, as picture-02; ②Artificial loading) then drive host machine hydraulic system to provide oil into concrete mixer bucket, it makes bucket blades mix material.

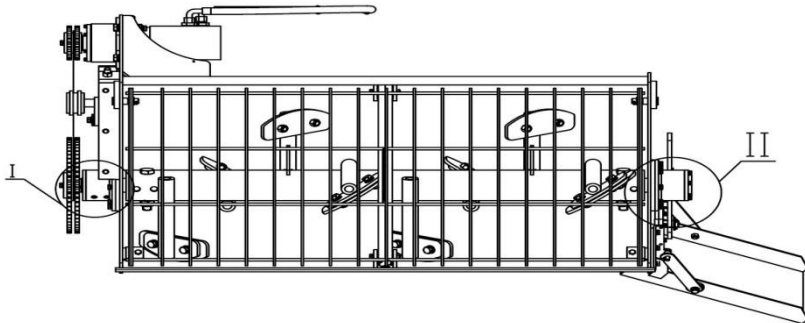


Picture-02

4. After material stirring evenly, ① Dump bucket to discharge material from front fence; ② Drive blades anticlockwise rotation, open side chute to discharge material.
5. After working, it should be promptly clean up the mixing bucket to prevent material dry and put bucket in dry place to be used next time.

、 Maintenance Instructions

- 1、 Thoroughly clean all the surface soil, dirt and grease.
- 2、 Check the visible signs of wear and tear, damage or damaged parts necessary repair, in order to avoid the influence is used next time.
- 3、 Check all bolt, nut and screw, screw down all the slack nut, nut and screw.
- 4、 Check the hydraulic system, solenoid valve group, and tighten all slack line connection.
- 5、 All the leakage of oil cylinder rod grease.
- 6、 All lubricating points(I, II) charging butter in turn. I-it need to remove the gear cover when filling butter.



Picture-03: lubricating points

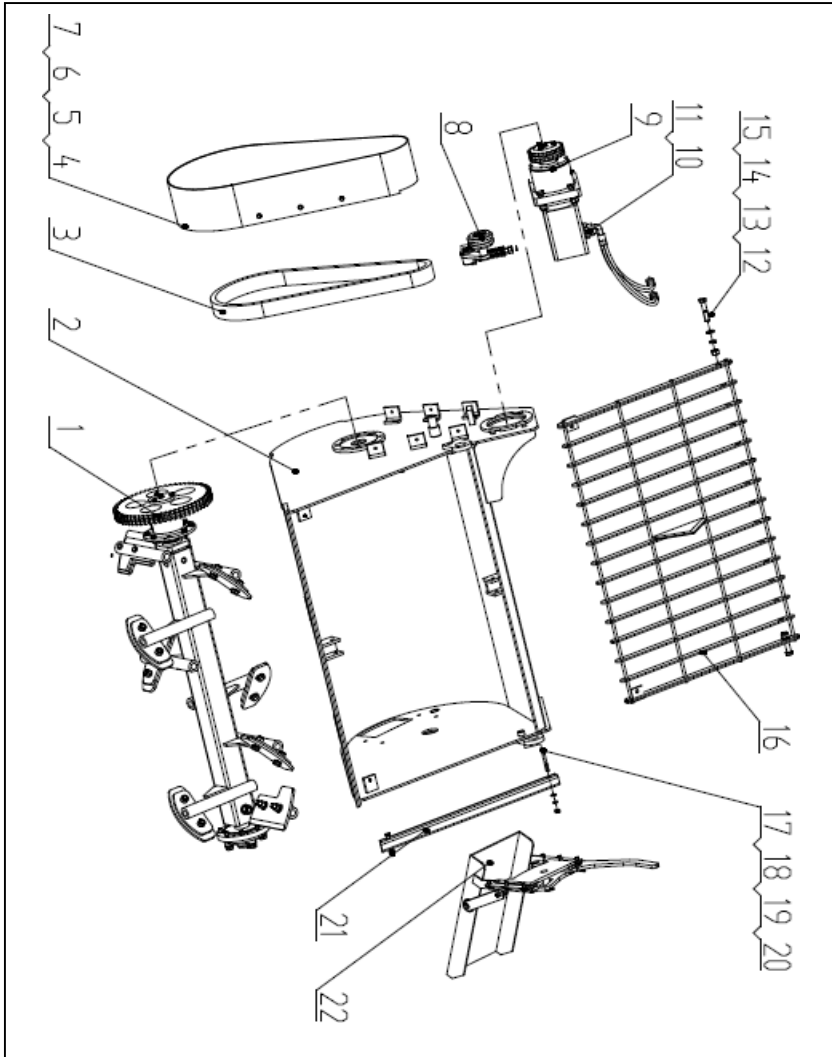
- 7、 The gear chain should be lubricated every 3 month.
- 8、 Replace damaged or vague marking label.

- 9、 If the paint is off or damage, please timely touch-up, prevent rust.

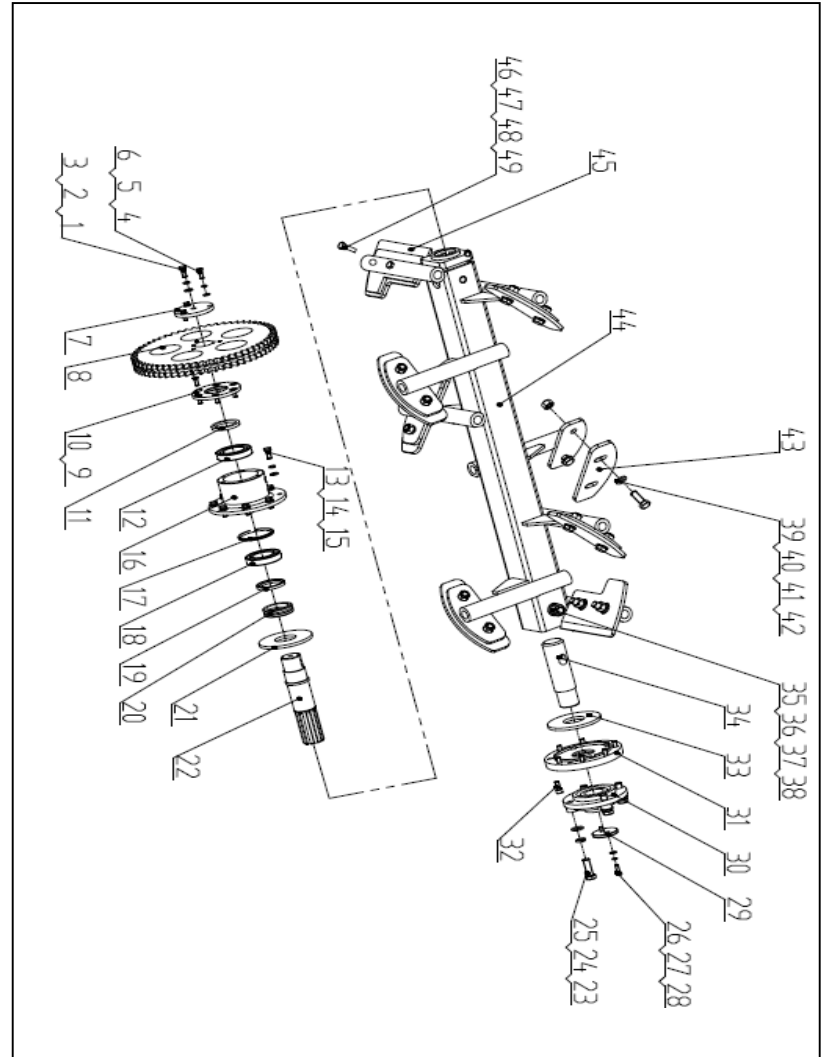
、 Storage Instructions

1. During stocking, put equipment on wood plate, do not directly put on ground.
2. Should be stored in a dry and safe place, exposed will shorten the service life of equipment.
3. All hydraulic pipeline and oil mouth close up with caps.
4. All the leakage of cylinder rod grease.
5. Regular maintenance on equipment.

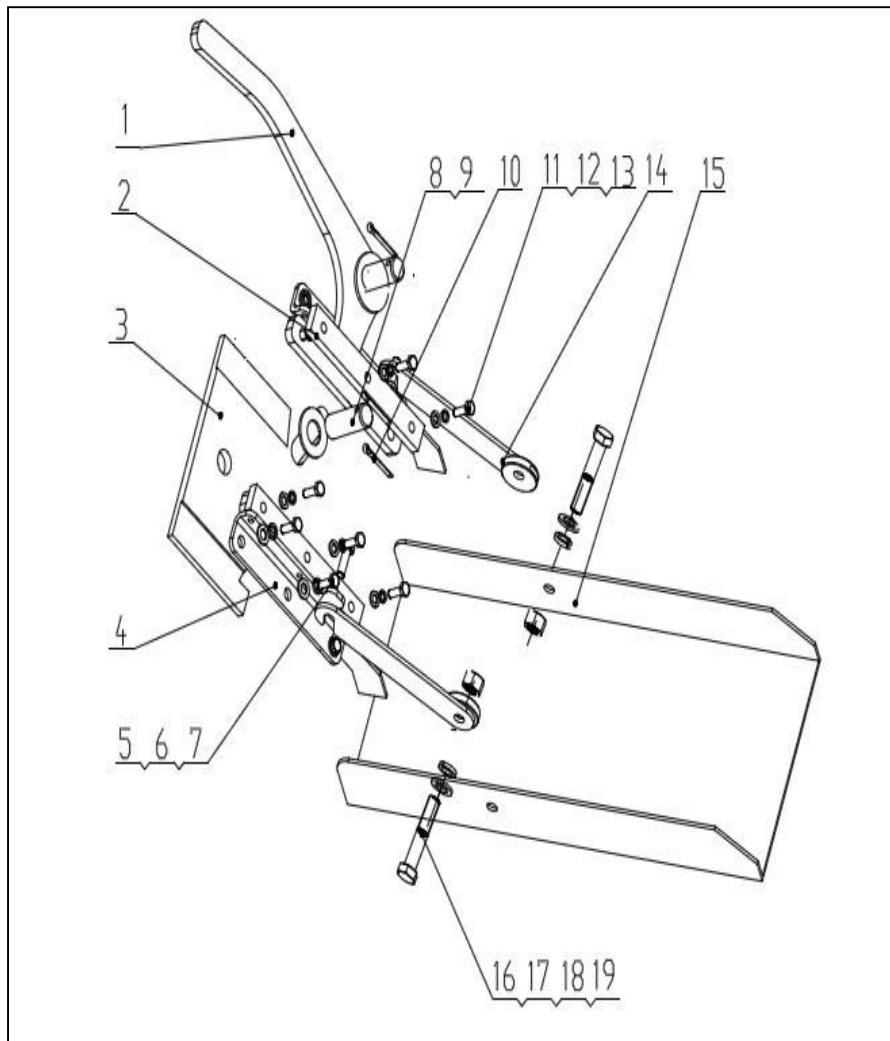
Product Breakdown Drawing



P1-1 Concrete Mixer Assembly



P1-2 Mixing Auger Assembly



P1-3 Discharge Port Device Assembly

Parts Detail Information

1-1 Concrete Mixer Assembly Details

No.	Part No.	Name	Quantity	Note
1	031060.01-01	Mixing auger assembly	1	
2	031060.01-02	Bucket	1	welded element
3	031060.01-03	Chain	1	
4	031060.01-04	Cover	1	welded element
5	031060.01-05	Bolt M8*25	6	GB/T 5783-2000
6	031060.01-06	Flat washer D8	6	GB/T 97.1-2002
7	031060.01-07	Spring washer D8	6	GB/T 93-1987
8	031060.01-08	Tension device	1	
9	031060.01-09	Motor	1	
10	031060.01-10	Straight joint	2	
11	031060.01-11	Tubes	3	
12	031060.01-12	Bolt M16*80	2	GB/T 5783-2000
13	031060.01-13	Flat washer D16	2	GB/T 97.1-2002
14	031060.01-14	Spring washer D16	2	GB/T 93-1987
15	031060.01-15	Nut M16	2	GB/T 6170-2000
16	031060.01-16	Fence	1	welded element
17	031060.01-17	Bolt M10*85	2	GB/T 5783-2000
18	031060.01-18	Flat washer D10	2	GB/T 97.1-2002
19	031060.01-19	Spring washer D10	2	GB/T 93-1987
20	031060.01-20	Nut M10	2	GB/T 6170-2000
21	031060.01-21	Square pipe	1	
22	031060.01-22	Discharger Device	1	

1-2 Mixing Auger Assembly Details

No.	Part No.	Name	Quantity	Note
1	031060.02-01	Bolt M8*25	3	GB/T 5783-2000
2	031060.02-02	Flat washer D8	3	GB/T 97.1-2002
3	031060.02-03	Spring washer D8	3	GB/T 93-1987
4	031060.02-04	Bolt M10*25	1	GB/T 5783-2000
5	031060.02-05	Flat washer D10	1	GB/T 97.1-2002
6	031060.02-06	Spring washer D10	1	GB/T 93-1987
7	031060.02-07	Cover plate	1	
8	031060.02-08	Driven wheel	1	
9	031060.02-09	Bearing end cover	1	
10	031060.02-10	Hexagon socket countersunk head screws M8*20	6	GB/T 70.3-2000
11	031060.02-11	O-ring seal	1	
12	031060.02-12	Bearing	1	
13	031060.02-13	Bolt M10*25	8	GB/T 5783-2000
14	031060.02-14	Flat washer D10	8	GB/T 97.1-2002
15	031060.02-15	Spring washer D10	8	GB/T 93-1987
16	031060.02-16	Bearing seat	1	
17	031060.02-17	spacer bush	1	
18	031060.02-18	Bearing	1	
19	031060.02-19	O-ring seal	1	
20	031060.02-20	Lip seal ring	1	
21	031060.02-21	Nylon jacket	1	
22	031060.02-22	Drive shaft	1	
23	031060.02-23	Bolt M16*50	4	GB/T 5783-2000
24	031060.02-24	Flat washer D16	4	GB/T 97.1-2002

25	031060.02-25	Spring washer D16	4	GB/T 93-1987
26	031060.02-26	Bolt M8*25	2	GB/T 5783-2000
27	031060.02-27	Flat washer D8	2	GB/T 97.1-2002
28	031060.02-28	Spring washer D8	2	GB/T 93-1987
29	031060.02-29	End Cover	1	
30	031060.02-30	Bearing seat	1	
31	031060.02-31	Cover plate	1	
32	031060.02-32	Dormant boltM10*20	8	
33	031060.02-33	Nylon jacket	1	
34	031060.02-34	Pin	1	
35	031060.02-35	Bolt M20*135	1	GB/T 5783-2000
36	031060.02-36	Flat washer D20	1	GB/T 97.1-2002
37	031060.02-37	Spring washer D20	1	GB/T 93-1987
38	031060.02-38	Nut M20	1	GB/T 6170-2000
39	031060.02-39	Bolt M16*45	6	GB/T 5783-2000
40	031060.02-40	Flat washer D16	6	GB/T 97.1-2002
41	031060.02-41	Spring washer D16	6	GB/T 93-1987
42	031060.02-42	Nut M16	6	GB/T 6170-2000
43	031060.02-43	Stir Plate	6	
44	031060.02-44	Mixing Auger Frame	1	welded element
45	031060.02-45	Scraper	2	
46	031060.02-46	Bolt M12*90	2	GB/T 5783-2000
47	031060.02-47	Flat washer D12	2	GB/T 97.1-2002
48	031060.02-48	Spring washer D12	2	GB/T 93-1987
49	031060.02-49	Nut M12	2	GB/T 6170-2000

1-3 Discharge Port Device Assembly Details

No.	Part No.	Name	Quantity	Note
1	031060.03-01	handle	1	
2	031060.03-02	Nylon Plate	2	
3	031060.03-03	Sluice gate	1	
4	031060.03-04	Compacting plate	2	
5	031060.03-05	Bolt M10*25	6	GB/T 5783-2000
6	031060.03-06	Flat washer D10	6	GB/T 97.1-2002
7	031060.03-07	Spring washer D10	6	GB/T 93-1987
8	031060.03-08	Flat washer D24	2	GB/T 97.1-2000
9	031060.03-09	Pin	2	
10	031060.03-10	Split pin D5*40	2	GB/T 91
11	031060.03-11	Bolt M8*25	6	GB/T 5783-2000
12	031060.03-12	Flat washer D8	6	GB/T 97.1-2002
13	031060.03-13	Spring washer D8	6	GB/T 93-1987
14	031060.03-14	Hanging plate	2	
15	031060.03-15	Discharging board	1	
16	031060.03-16	Bolt M12*40	2	GB/T 5783-2000
17	031060.03-17	Flat washer D12	2	GB/T 97.1-2002
18	031060.03-18	Spring washer D12	2	GB/T 93-1987
19	031060.03-19	Nut M12	2	GB/T 6170-2000



