

**PRODUCT OPERATION MANUAL**

---

**0202 Pick Up Broom**

---

**2016/10/21**

# CATALOGUE

## I . Safety Instruction

I.	Safety Instruction .....	2
II.	Products Instruction .....	3
III.	Operation Instruction .....	4
IV.	Maintenance Instructions.....	5
V.	Storage Instructions.....	6

Before using this equipment, operator must read and study the following content to have a better understanding of this equipment. Before operating this equipment, operator should pay attention to following contents:

1. Carefully read equipment operating instructions, be familiar with and understand performance of the equipment, and know how to operate it.
2. Understand all safety labels on the equipment, keep cleanness of labels, don't literally of nostalgia, mobile and damage any security label, if there is a case of damage or illegible, labels should be replaced immediately.
3. In working area, set up a warning board to tell others not close to working area, to prevent stone splash.
4. Check this attachment carefully, do not use this attachment under any un-safety condition.

### **Before Operating:**

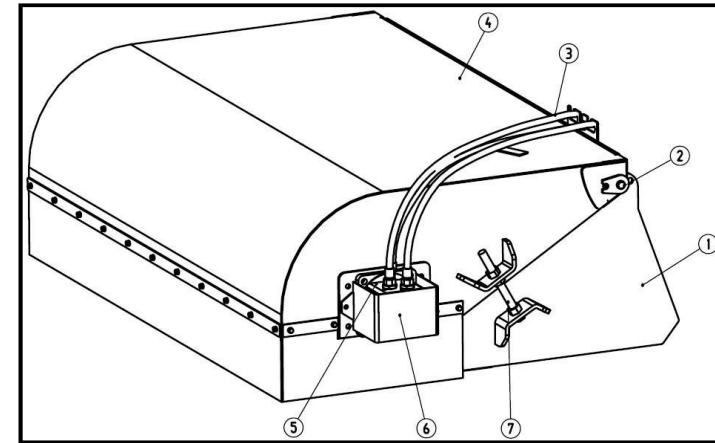
- 1, Keep oil off when connect sweeper to power supplier, check all controls under normal condition.
- 2, Operating sweeper attachment in safety area.
- 3, Make sure sweeper attachment mounted fastness.
- 4, Make sure all hydraulic joints and hydraulic device mount fastness.
- 5, Reference to maintenance instruction, change damage parts.
- 6, Make sure host machine pressure is correct, less pressure will affect performance of sweeper.
- 7, Remove any goods around backhoe attachment working area.
- 8, when unloading rubbish, make sure brushes on sweeper are contrarotate.

- 9、Wearing suitable working cloth, such as: Long sleeve shirt with cuff fasten,  
Wearing protective goggles or face mask or dust mask.

### During Operating:

- 1, during working, comply with all government rules and regulations, local laws and regulations.
- 2, No matter any reason, when operator leave operating area, he has to down sweeper attachment to the ground and stop its engine, then start parking brake and pull out the key.
- 3, Make sure hands, feet, hair, and loose clothes far away from moving parts on sweeper.
- 4, When operating sweeper and power supply, leave protection and safety equipment in place.
- 5, When operating sweeper in rough terrain, slow down working speed to avoid sweeper bouncing, reduce the damage to sweeper
- 6, Do not work close to people, buildings, vehicles or other objects may be damaged by flying objects.

## II. Products Instruction



### 1、 Construction:

- ①— Back Bucket    ②—pin    ③—hoses    ④— cover    ⑤— motor  
⑥—Hood    ⑦—Adjuster bolt

### 2、 Technical Performance

<b>0202 Technical Performance</b>			
Model	020284	020260	020272
Overall length (mm)	1400	1400	1400
Overall width (mm)	2466	1817	2117
Overall height (mm)	680	926 with spring	926 with spring
Overall weight (kg)	625	374	426
Bucket capacity (m <sup>3</sup> )	0.56	0.36	0.43
Sweeping width (mm)	2130	1524	1830
Brushes diameter (Φ)	660	660	660
Working pressure (Mpa)	14-24	14-24	14-24
Motor flow (L/Min)	60-80	60-80	60-80

### III. Operation Instruction

- 1、 Start host machine, connect hitch frame on sweeper with host machine hitch part, pull rocker to pin sweeper on host machine tightly.
- 2、 Start sweeper, make the brush roll begin to spin. Lower sweeper on to ground, then host machine walk forward and sweeper start cleaning.
- 3、 Reducing press action to sweeper to avoid brushes wearing quickly. After a period time of using, adjust adjuster bolt to insure road cleaning area.
- 4、 In order to make the operation more convenient, more reliable, try to put low of sweeper, to prevent accidental movements.
- 5、 After cleaning , lift sweeper and pull rubbish from sweeper back bucket.
- 6、 When unloading, do not knock, shake bucket, forbidden brute force

operation on sweeper

- 7、 Brush roll low running speed and host machine moderate walking speed can have a best cleaning for gravel on rigid pavement. If host machine in high speed walking will raise dust, then affect operator sight line.
- 8、 Cleaning width is smaller than sweeper width, if road has bigger grit, please slow down working speed.
- 9、 Start and stop sweeper in idling situation.

### IV. Maintenance Instructions

1. After working, cleaning sweeper bucket and brush drum.
2. Thoroughly clean soil, dirt and grease on sweeper surface.
3. Cover lids on hydraulic tubes, motor, cylinder and magnetic valve connector.
4. Tighten all loose bolts and nuts.
5. All lubricating points fill with grease.
6. Replace damaged or fuzzy marking labels.
- 7、 **Brush roll adjustment:**  
 Suitable adjustment can make brushes in best working condition, checking brushes as following steps:
  - ① Move sweeper on flat and dirt road
  - ② Make brush roll in low speed rotating, down sweeper at minimum height, working 10 minutes in working status.
  - ③ Lifting sweeper and back up host machine, start brake, close power supply, check brush roll, brush roll sweeping width is between 50-100mm, length is brush roll length.

Note:

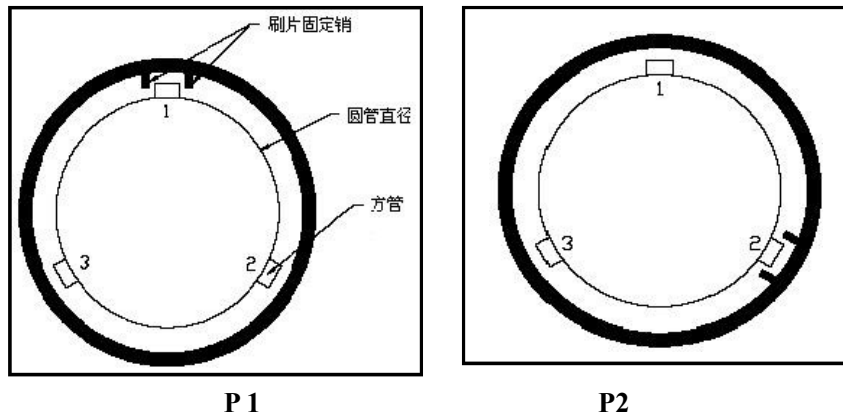
For improving brush working time, please uniform adjust two bolts.

### 8、 Brushes replacement:

- ① Remove motor connecting bolts
- ② Remove bearing connection bolt
- ③ Remove the side plate
- ④ remove the brush roller part
- ⑤ Remove the brush fixed plate

① Remove old brush.

② as following steps to install new brushes: cross-install as P1 & P2



## V. Storage Instructions

- 1、 During storage, brushes can not connected with ground for avoiding rusting, then reducing brushes working time.
- 2、 During storage, cover lids on hydraulic tubes and motor, thoroughly clean

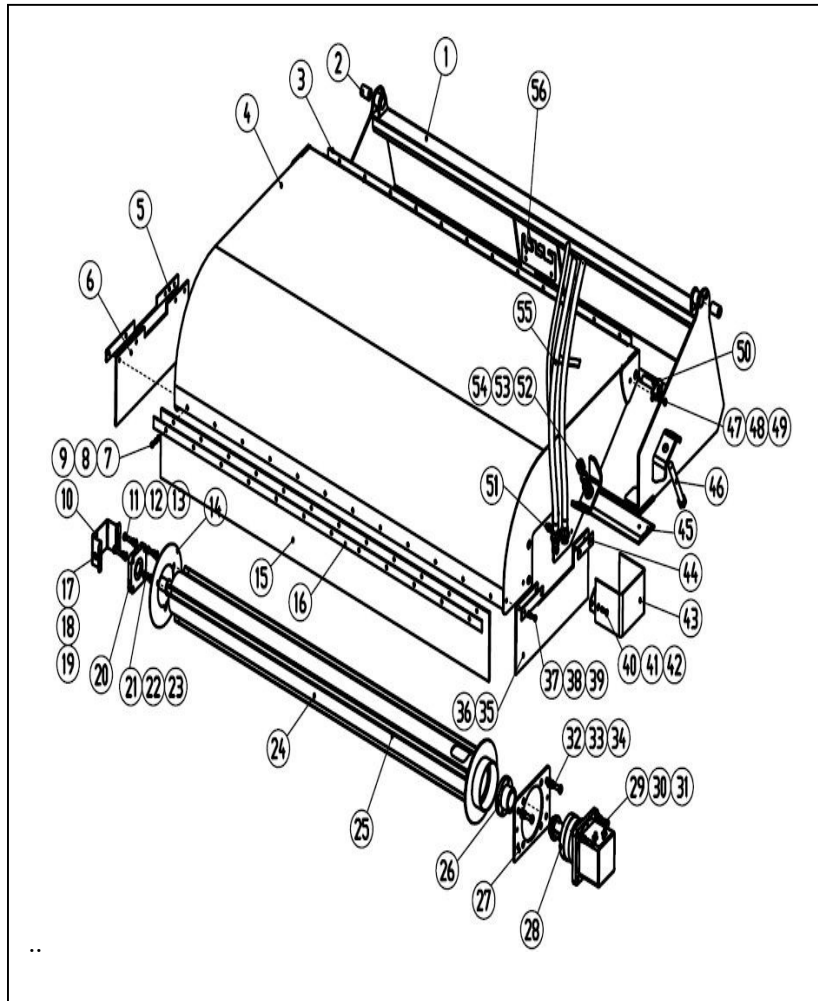
soil, dirt and grease on sweeper surface

2、 After working, cleaning sweeper bucket and brush drum.

3、 Do not put heavy goods on brushes, otherwise the brushes will be out of shape, and damage the performance of the sweeper, it's better to put sweeper on wood plate.

4、 Brushes material is Polypropylene, so sweeper should keep distance of intense heat or flame, and PP brushes cannot stock in sunshine.

## 一. Product Breakdown Drawing



## 二. Parts Subsidiary

序号	零件号	名称	数量	备注
1	020272-01	Bucket after	1	

2	020272-02	Nylon sleeve	2	
3	020272-03	Former bead I	1	
4	020272-04	cover	1	
5	020272-05	Side bead I	1	
6	020272-06	Side ash damper I	1	
7	020272-07	bolt	24	
8	020272-08	Flat mat	24	
9	020272-09	spring washer	24	
10	020272-10	Bearing housing	1	
11	020272-11	bolt	4	
12	020272-12	Flat mat	4	
13	020272-13	spring washer	4	
14	020272-14	Brush baffle	1	
15	020272-15	Before ash damper	1	
16	020272-16	Former bead II	1	
17	020272-17	bolt	2	
18	020272-18	Flat mat	2	
19	020272-19	spring washer	2	
20	020272-20	bearing	1	
21	020272-21	bolt	3	
22	020272-22	Flat mat	3	
23	020272-23	Disc pad	3	
24	020272-24	spindle	1	
25	020272-25	brush	42	
26	020272-26	shaft sleeve	1	
27	020272-27	Motor mounting plate	1	
28	020272-28	Motor	1	
29	020272-29	bolt	4	
30	020272-30	Flat mat	4	

31	020272-31	spring washer	4	
32	020272-32	bolt	4	
33	020272-33	Flat mat	4	
34	020272-34	Disc pad	4	
35	020272-35	Side ash damper II	1	
36	020272-36	Side bead II	1	
37	020272-37	bolt	8	
38	020272-38	Flat mat	8	
39	020272-39	spring washer	8	
40	020272-40	bolt	2	
41	020272-41	Flat mat	2	
42	020272-42	spring washer	2	
43	020272-43	Motor housing	1	
44	020272-44	Side bead II	1	
45	020272-45	Wear plate	1	
46	020272-46	Adjusting bolt	2	
47	020272-47	bolt	2	
48	020272-48	Flat mat	2	
49	020272-49	spring washer	2	
50	020272-50	Pin shaft	2	
51	020272-51	joint	3	
52	020272-52	Flat mat	4	
53	020272-53	spring washer	2	
54	020272-54	nut	2	
55	020272-55	tubing	3	
56	020272-56	Tubing flip chart	1	

