



## HCN ATTAMCHMENTS CONTENT YOUR NEED

## PRODUCT OPERATION MANUAL

### Our contact information:

**Address:** No.1 Huake Road, Xuzhou Economic and  
Technological Development Zone,  
Xuzhou, China

**Postcode:** 221004

**Tel:** 0516-66881280 66881281

**Fax:** 0516-66881272

**Website:** <http://www.hcn-atta.com>

**Product Model:** 0305 Rock Saw

**Preparation date:** 2023.8.20

**XUZHOU HCN ATTACHMENT MANUFACTURE CO., LTD.**

### Warm reminder:

Please read the manual carefully before installing and using the product.

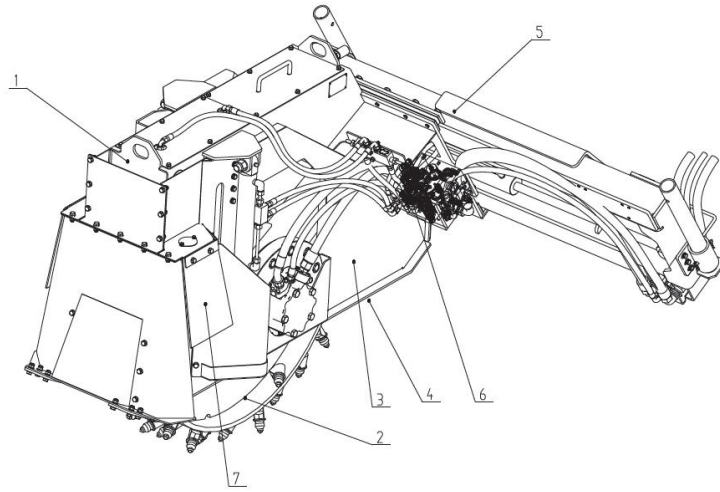
# CATALOGUE

1. Safety Instruction .....	2
2. Product Structure Instruction .....	3
3. Operation Instruction .....	3
4. Maintenance Instructions .....	4
5. Storage Instructions .....	4

## 1. Safety Instruction

1. Please read this instruction manual carefully before using this equipment to avoid personal injury.
2. Before using this equipment, you should know the production capacity or working capacity, size and operation procedure of the equipment.
3. Hydraulic oil is under high pressure and will cause injury or even death if it leaks. Operators should try to stay away from the oil pipe joints where leakage may occur.
4. Do not modify the equipment, so as not to cause performance, safety and reliability of the reduction.
5. The working environment of the equipment requires; the ground is flat and the view is open.
6. Operators should ensure that no one is around the equipment when using it;
7. The equipment in operation, the operator shall not leave.
8. The operator shall not operate under the influence of alcohol, otherwise it will reduce the ability to judge the danger signal .
9. When the operator leaves the main machine, he should lower the machine to the ground, then turn off the engine of the main machine and pull out the key.
10. Check all fasteners to make sure there is no looseness. Damaged pieces should be replaced in time. Check whether all warning labels are clean and clear, and replace them in time if they are damaged.

## 2. Product Structure Description



- 1-Main frame    2-Milling wheel disc    3-Side lifting device  
 4-Automatic scraping device    5-Side shifting device  
 6-Hydraulic system    7-Protection device

### Product Performance Indicators:

030518I Rock Saw Technical Parameters		
Model	030518I	030516
Overall width(mm)	1750	1660
Overall length(mm)	1940	1820
Overall height(mm)	1450	1350
Grooving width (mm)	200	100

Depth of cut(mm)	150-450	100-400
Side shift (mm)	650	650
Number of cutterheads	62	62
Reference weight (including pendant) (Kg)	1150	1000
Allowable maximum pressure (MPa)	28	24
Working flow rate (L/min)	100-150	
Working voltage(V)(optional)	12/24	
Applicable models	Skid steer loaders (with high-flow output system)	

Applicable conditions:

- ① Asphalt, frozen ground.
- ② Hard soil layer containing gravel.

Applicable models: ①High flow rate skid steer loader

**Annex: Please install the limiting block according to the condition of the mainframe.**

### 3. Operation Instruction

This machine is suitable for cutting asphalt, frozen ground, hard soil layer containing gravel, and it can locate more accurately than pneumatic or liquid-activated crushing hammers. It is suitable for road repair, discharging of water pipes, gas pipes, electric and fibre optic pipes, etc., and it is an ideal tool for road maintenance and municipal construction. The specific operation is as follows:

The host is supplied with oil, and the control box button corresponds to the operation: press the power button switch, the milling wheel disc rotates, the handle switch rotates to the 1st gear position, the first knob switch rotates to the left, and the side oil cylinder rises; the first knob switch rotates to the right, and the side oil cylinder falls. The rest of the buttons operate in the same way:

**Note:**

- 1) **Before entering the ground, determine the trenching depth according to the depth device marking (such as Figure 1)**
  - 2) **When moving forward, both sides of the adjustment part and the road surface to maintain the level (such as Figure 2).**
  - 3) **When working, it is strictly prohibited for people to stand in front of the trencher; it is strictly prohibited for people to touch the trencher.**
1. To ensure that the host and disc trencher (hereinafter referred to as the trencher) normal connection: mechanical connection, hydraulic connection, electrical connection.
  2. The host arm raised, so that the trenchers elevated from the ground 0.2 m. Press the power switch, the milling disc began to rotate, rotate the knob switch two, to determine the side of the trenchers to the designated position; rotate the knob switch one, set the depth of the trenching, rotate the knob switch three, the scraper down to the bottom, and the

milling disc level.

3. The big arm of the host machine is lowered to make the milling wheel disc of the trencher land on the ground; at the same time, the sliding shoe is recovered to make the trencher device leave the ground;
4. Adjust the angle of the slide shoe so that the cutter head slowly touches the ground and starts to work; gradually increase the rotation speed and continue to adjust the angle of the slide shoe so that the cutter head enters below the ground (if it encounters jamming phenomenon, the angle of the slide shoe can be recovered, and the trenching work can be carried out again after normal operation). ; After both sides of the adjustment part contact with the ground, the host can appropriately step forward to facilitate the levelling device to fit with the ground.
5. To be both sides of the adjustment part and the ground affixed to the solid, and then the operator straight line slow operation forward work (according to the actual working conditions, you can adjust their own forward speed. In case of jamming phenomenon, you can step back appropriately, and then work forward).
6. After the completion of trenching, press the power button switch, the trenching device stops working, the host arm lifts up, and the trenching machine is elevated 0.2m from the ground; rotate the knob switch one, make the side cylinder retracted in place, shut down and clean up the trenching machine, and place it in a safe area.

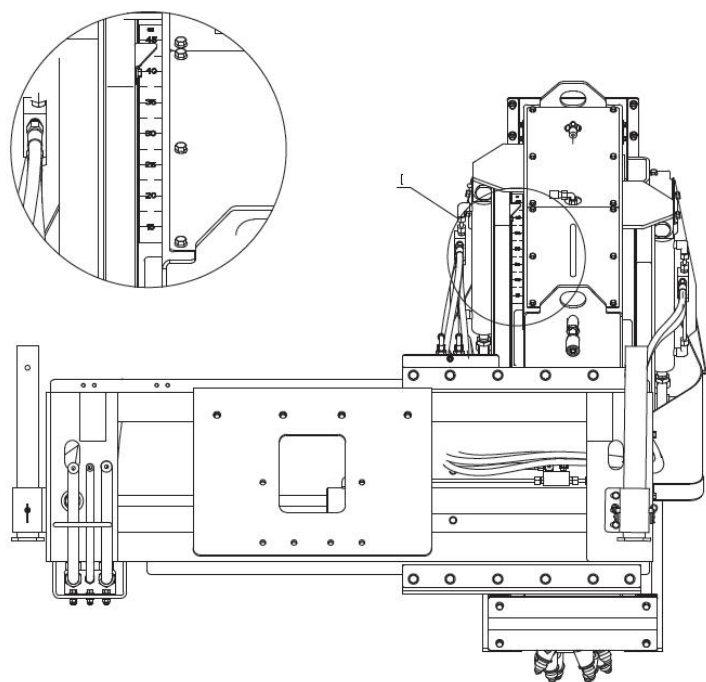


Figure 1 Depth table

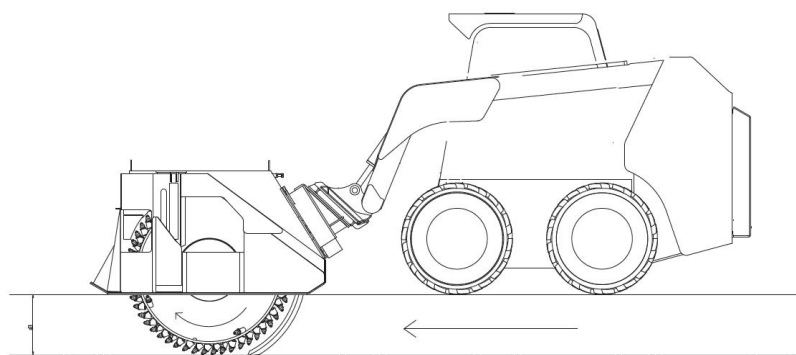


Figure 2 Schematic diagram of work

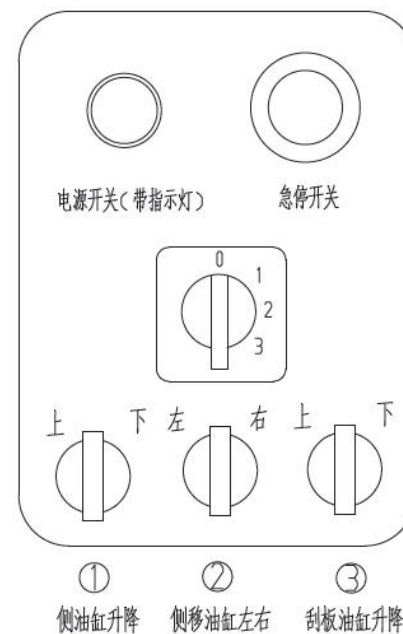


Figure 3 Control box

#### 4. Maintenance Instructions

Regular maintenance is the key to keep the long life and safe work of the machine, the maintenance items described below are more important.

1. Check whether all the fasteners are loose, and tighten them in time.
2. Check the hydraulic system of the machine, whether there is leakage phenomenon, if there is to replace the leakage of the oil pipe connector or oil pipe in time.
3. Check whether there is damage to the parts on the equipment and whether there are cracks in the welded joints, if necessary repair if necessary.
4. Clean up the debris and dirt on the machine in time after an operation is

completed.

5. In the maintenance, be sure to turn off the host engine, and in the host of the more obvious position to hang a warning sign written "under repair" to prevent others from approaching.
6. Need to replace parts, only use the manufacturer's approved parts replacement.

## **5. Storage Instructions**

1. After the operation is completed, all debris, dirt and grease should be removed from the machine.
2. Should be stored in a dry and non-corrosive environment, so as to avoid the surface of the machine by the rust and corrosion of the surface of the machine.
3. Apply grease wherever it is needed.
4. When the machine is placed, the levelling device is levelled with the ground to ensure that the trencher is placed in a smooth position.